

# SAN MATEO COUNTY, CA: BEYOND DATA CONVERSION

Bruce Harris & Associates, Inc. (BHA) was contracted by the Office of the Assessor Clerk Recorder Elections (ACRE) of San Mateo County, California to provide a full remapping of the County's data, which is being delivered in the Parcel Fabric. By undergoing a full remap, rather than simply converting their existing data, the County will ensure that the maps will be in a digital format for future use and preservation.

## THE CHALLENGE

ACRE was creating parcels using hand-drawing methods, as well as using AutoCAD and GeoMedia to draw Assessor Maps, condos, and subdivisions. This resulted in challenges, such as redundant efforts, license management issues, lack of data integrity, and an inability to share data cross-departmentally and with the public.

Creating a seamless digital GIS that replicated their individual Assessor Map pages also produced challenges due to duplicate boundaries, annotation features, accuracy standards and parcel geometry.

## THE SOLUTION

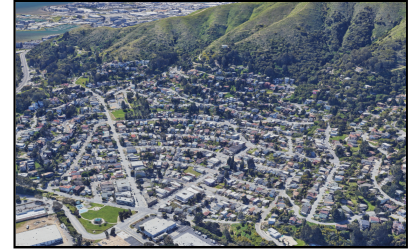
BHA consolidated multiple databases and hand drawn maps into Esri's LGIM. The parcels were all redrawn from source documents and coordinate geometry was used and stored for all of the parcels. The parcels have been delivered in Esri's Parcel Fabric Data Model. BHA also created an automated Assessor map routine using ArcPy and Data Driven Pages.

## THE RESULTS

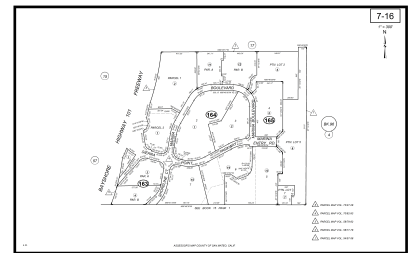
ACRE is nearly half way through the project with a final delivery schedule of Q2 2020. The County is currently mapping in the Parcel Fabric, and has eliminated redundancies in their workflow. By redrawing all of the parcels the issues of duplicate boundaries and parcel geometry have been eliminated, thus ACRE has achieved the highest level of accuracy in their data. ACRE is now able to create Assessor Maps on the fly based off their seamless GIS and share their data with the public and across departments.

*"We set out to complete a very ambitious mapping project and without the right partner, it probably wouldn't have been possible. This investment improves the accuracy and integrity of our data, allows us to provide the public and other county departments with data and services that were never before possible and best of all, will save taxpayer dollars for years to come."*

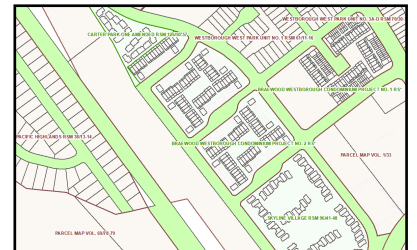
-- Randall J. Mellin, Deputy Clerk-Assessor-Recorder, San Mateo County, CA



EXAMPLE OF SMC TERRAIN



EXAMPLE ASSESSOR MAP DELIVERY



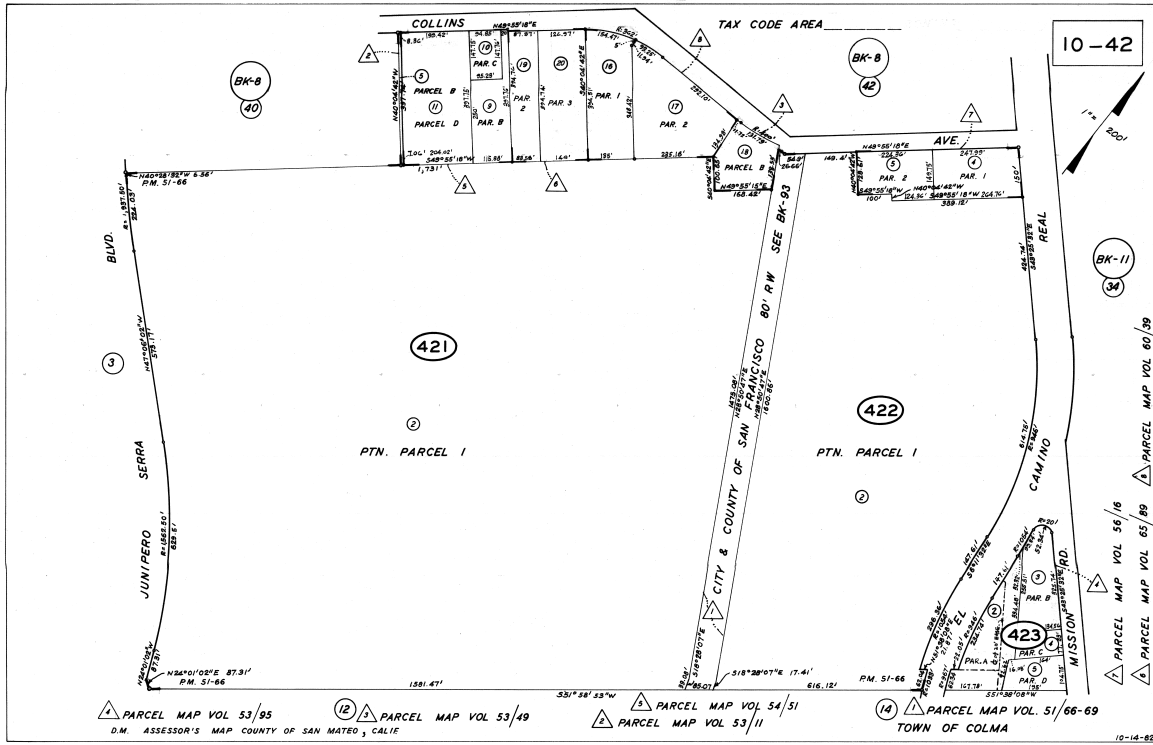
EXAMPLE PARCEL FABRIC DELIVERY

## THE PARTNER

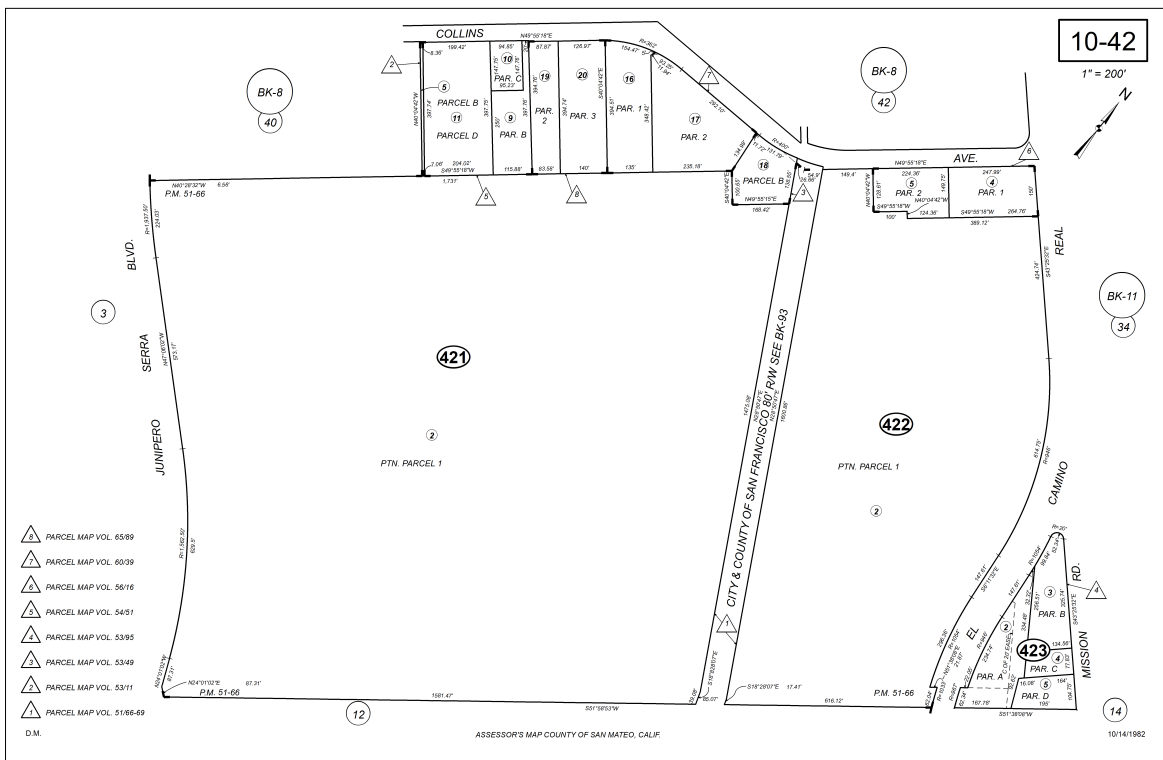
BHA is a professional Geographic Information System (GIS) company specializing in GIS mapping and product development. BHA has been an Esri business partner since 1997, and employs Esri's best practices in all mapping projects.



# SAN MATEO COUNTY, CA: BEYOND DATA CONVERSION

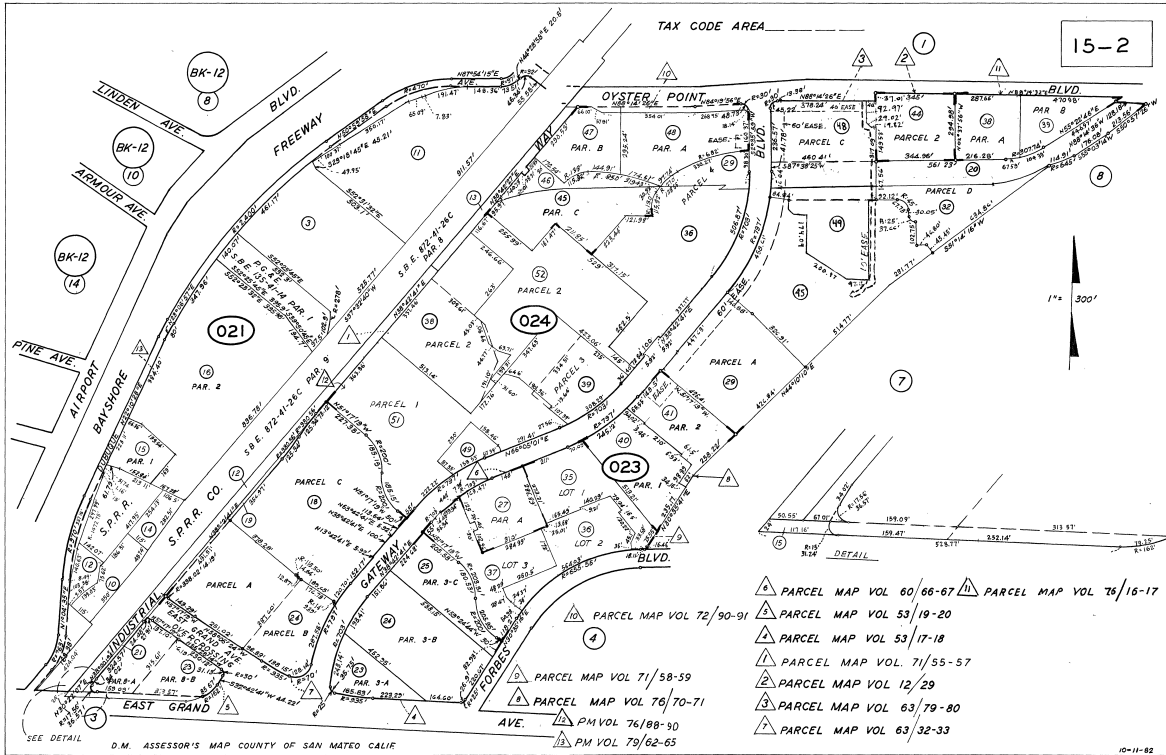


ORIGINAL ACRE ASSESSOR MAP ^

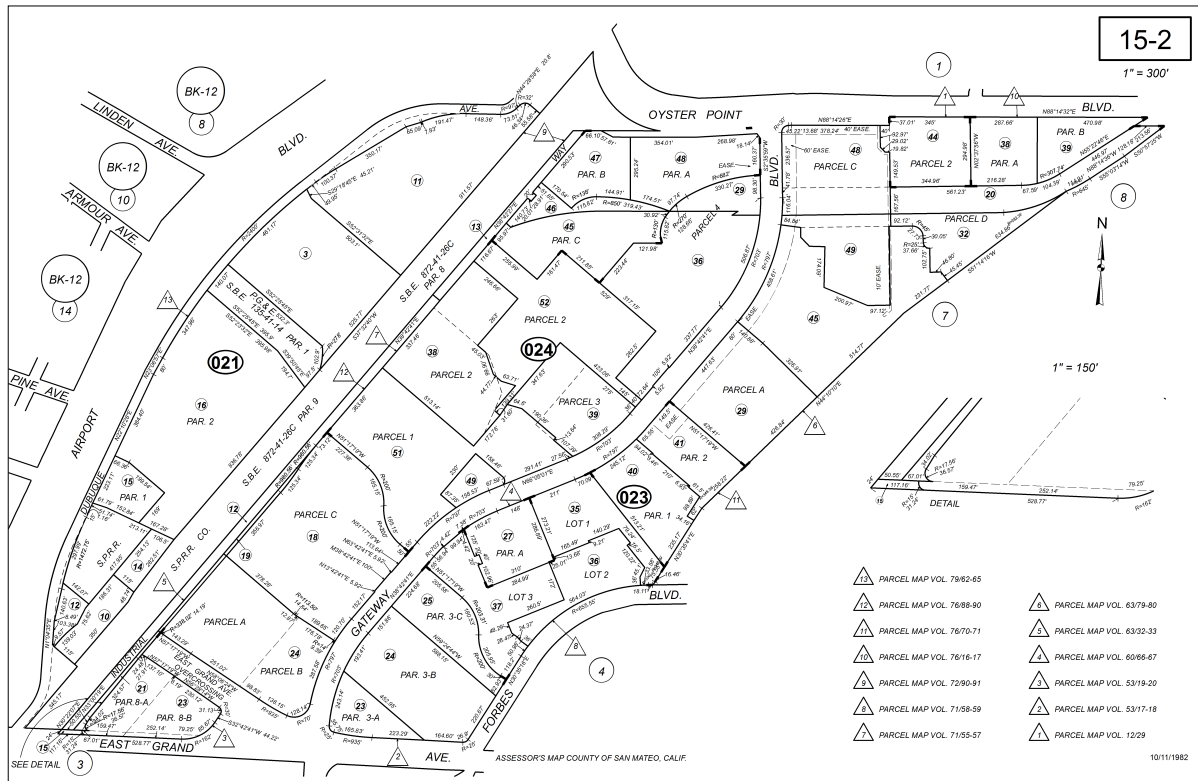


NEW ACRE ASSESSOR MAP ^

# SAN MATEO COUNTY, CA: BEYOND DATA CONVERSION



**ORIGINAL ACRE ASSESSOR MAP ^**



**NEW ACRE ASSESSOR MAP ^**